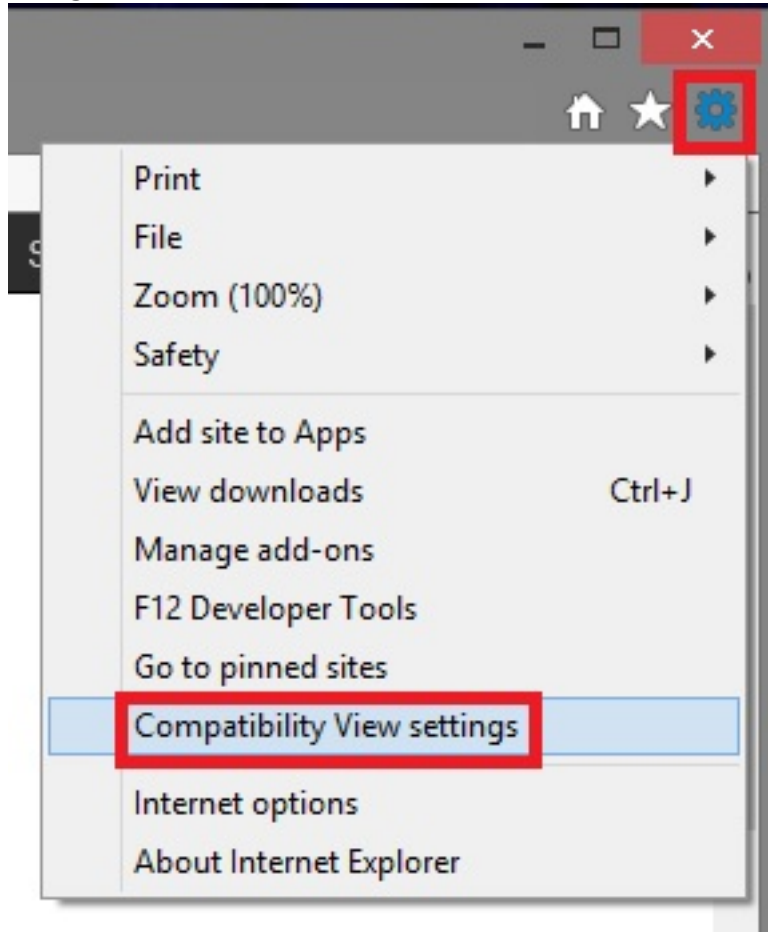


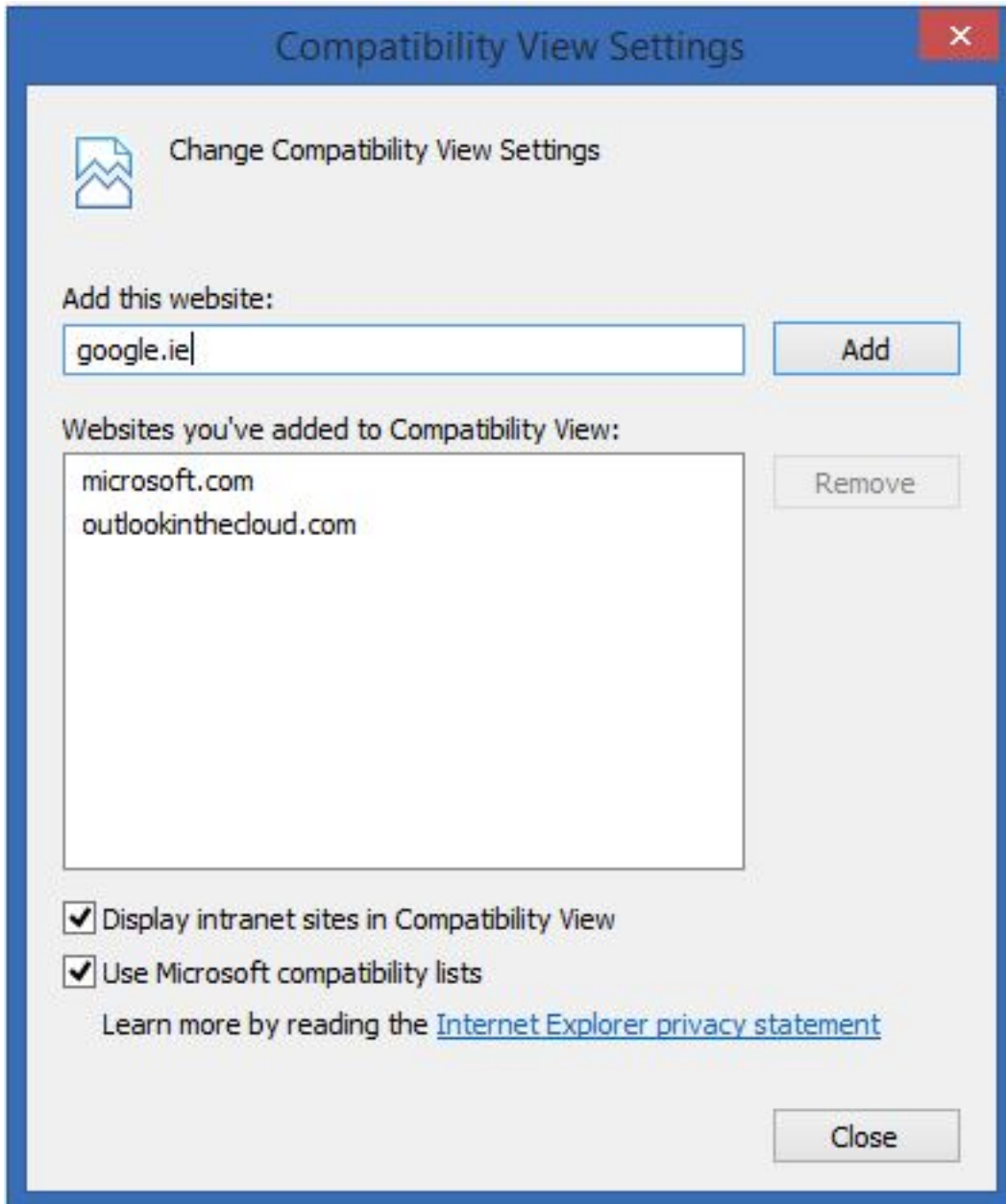
How to add a website to IE11 compatibility mode

IE 11 Compatibility Mode

1. Open Internet Explorer
2. In the top right of the window click on the gear and select Compatibility View Settings



- 1.
3. In the open box add the website URL and click add



Your desired website is now set for compatibility mode within Internet Explorer 11

Unique solution ID: #1045
Author: Michael Neal
Last update: 2015-05-11 13:20