

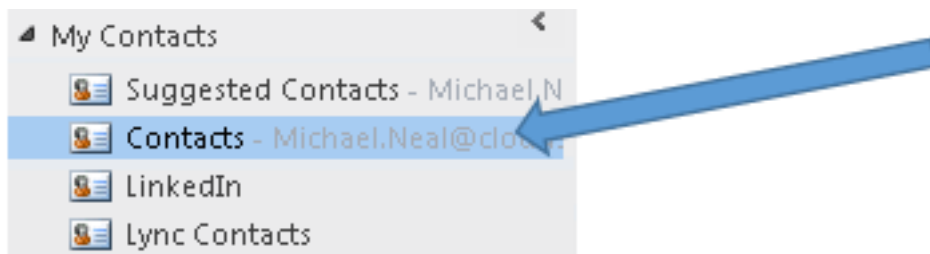
Procedures

How to add Suggested Contacts after Migrating Mailboxes with MigrationWiz.

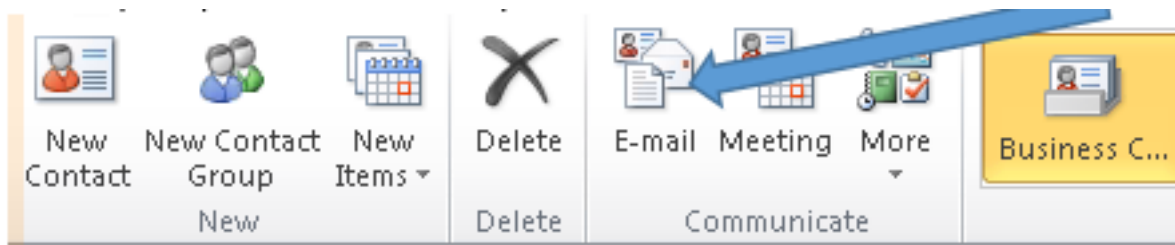
Click Contacts



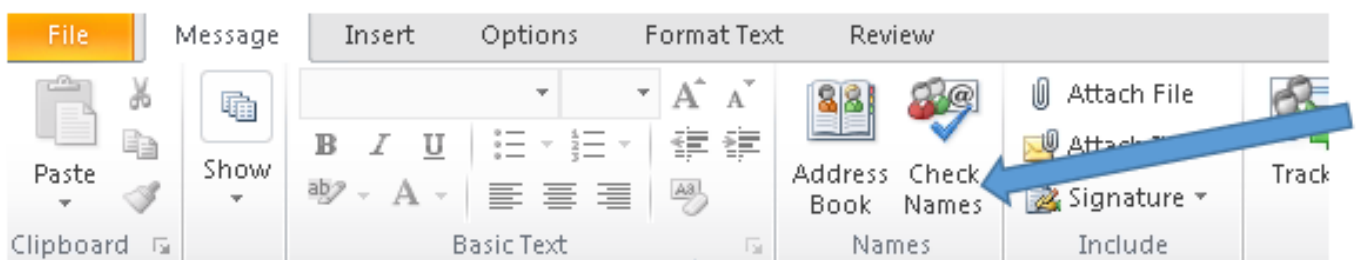
Click Contacts



Select (Click) the first one contact and press CTRL+A to select all contacts

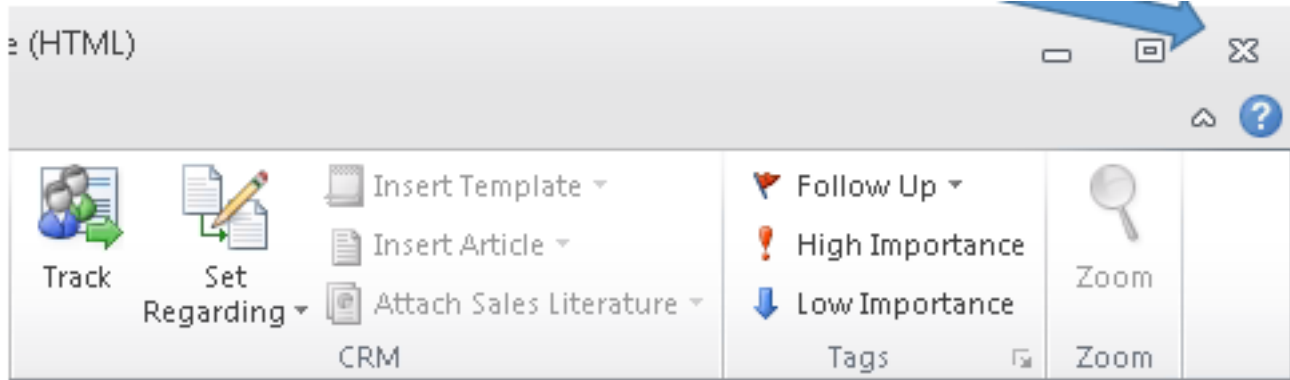


Click E-Mail

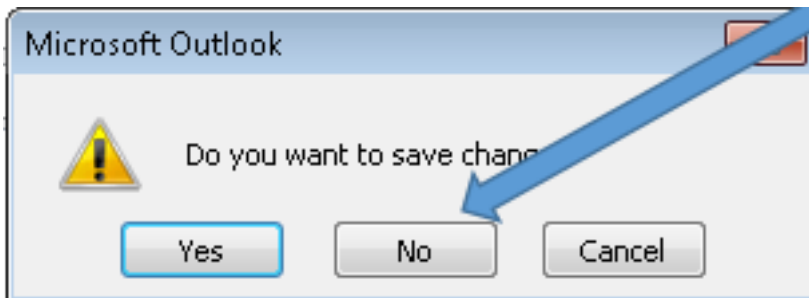


Click Check Names

Procedures



Once finished click the close button



Click No if asked to save changes

Click Mail and open a new email and test the suggested contacts.

Unique solution ID: #1019
Author: Michael Neal
Last update: 2014-10-28 12:08